



## OTTOMANS



**YOUR SEATING SOLUTION SPECIALISTS**



Proudly 100%  
Australian Owned



## Bench



**OTTBEN/SS**  
with optional  
stainless steel finish



**OTTBEN/B**  
Black powder coat finish

**Features:**

- 18mm MDF base board.
- Commercial grade foam.
- Cosmetic seat stitching (on units 1mtr and above).
- Top stitched upholstered cover.

**Frame:**

- 4 leg - welded square tubular steel (6 leg on units 1200mm in length and above).
- Black powder coat finish.

**Options:**

- Choice of fabric (refer to page 10).
- Chrome or stainless steel finish.
- Custom sizes.
- Seat buttons.
- Seat piping.
- Sled or box frame.

**Weight:**

- 150kg per seat (based on average width of 500 - 600mm).

**Warranty:**

- 5 year.



## Burst



**BURST**

**Features:**

- Commercial grade foam.
- Curved chrome legs.
- Commercial grade timber frame (refer to page 9).
- Top stitched upholstered cover.

**Options:**

- Choice of fabric (refer to page 10).

**Weight:**

- 120kg.

**Warranty:**

- 5 year.



## Circular

### Features:

- Black polypropylene 25mm glides.
- Commercial grade foam.
- Commercial grade timber frame (refer to page 9).
- Top stitched upholstered cover.

### Options:

- Choice of fabric (refer to page 10).
- Custom sizes.
- Optional glides (refer to page 9).
- Seat piping.

### Weight:

- 120kg.

### Warranty:

- 5 year.



OTTCIR/450



## Elipse

### Features:

- Black polypropylene 25mm glides.
- Commercial grade foam.
- Commercial grade timber frame (refer to page 9).
- Top stitched upholstered cover.

### Options:

- Choice of fabric (refer to page 10).
- Optional glides (refer to page 9).
- Seat piping.

### Weight:

- 120kg per seat (based on average width of 500 - 600mm).

### Warranty:

- 5 year.



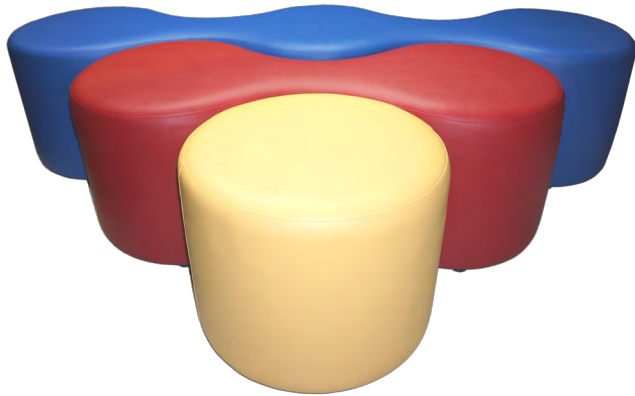
**OTTELIP**  
With optional  
stainless steel glides



Proudly 100%  
Australian Owned

ENQUIRES: 03 9761 7110  
WWW.OFFICESEATING.COM.AU

## Goober



**OTTGOOSET**  
Goober set  
Single, twin and triplet



**OTTGOO02**  
Goober twin



**OTTGOO03**  
Goober triplet

**Features:**

- Black polypropylene 25mm glides.
- Commercial grade foam.
- Commercial grade timber frame (refer to page 9).
- Top stitched upholstered cover.

**Options:**

- Choice of fabric (refer to page 10).
- Optional glides (refer to page 9).
- Single, twin, triplet or full set.

**Weight:**

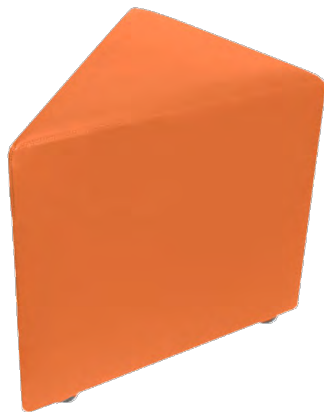
- 120kg per seat (based on average width of 500 - 600mm).

**Warranty:**

- 5 year.



## Isos



**OTTISOS**  
Single



2 x Singles



4 x Singles

**Features:**

- Black polypropylene 25mm glides.
- Commercial grade foam.
- Commercial grade timber frame (refer to page 9).
- Top stitched upholstered cover.

**Options:**

- Choice of fabric (refer to page 10).
- Optional glides (refer to page 9).

**Weight:**

- 120kg.

**Warranty:**

- 5 year.



## Jigsaw

### Features:

- Black polypropylene 25mm glides.
- Commercial grade foam.
- Commercial grade timber frame (refer to page 9).
- Top stitched upholstered cover.

### Options:

- Choice of fabric (refer to page 10).
- Optional glides (refer to page 9).
- Small or large rectangle, small or larger corner and square.

### Weight:

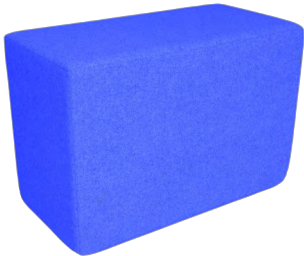
- 120kg per seat (based on average width of 500 - 600mm).

### Warranty:

- 5 year.



**Jigsaw Range**



**JIG-SM/REC**  
Small Rectangle



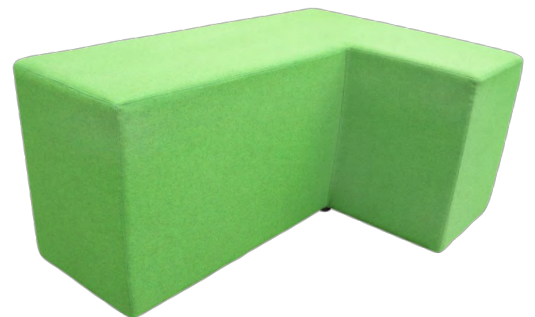
**JIG-SQ**  
Square



**JIG-SM/CRN**  
Small Corner



**JIG-L/REC**  
Large Rectangle



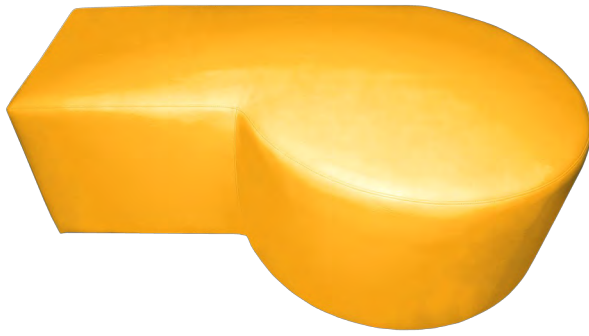
**JIG-L/CRN**  
Large Corner



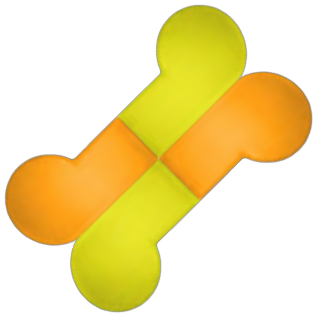
Proudly 100%  
Australian Owned

ENQUIRES: 03 9761 7110  
WWW.OFFICESEATING.COM.AU

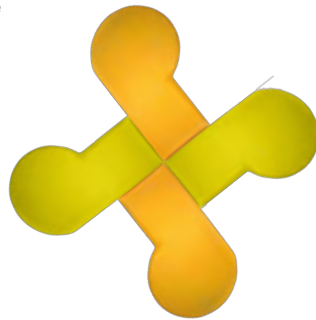
## Mara



**OTTMARA**  
Single



4 x Singles



4 x Singles

### Features:

- Black polypropylene 25mm glides.
- Commercial grade foam.
- Commercial grade timber frame (refer to page 9).
- Top stitched upholstered cover.

### Options:

- Choice of fabric (refer to page 10).
- Optional glides (refer to page 9).

### Weight:

- 120kg per seat (based on average width of 500 - 600mm).

### Warranty:

- 5 year.



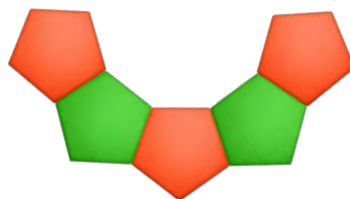
## Pentagon



**OTTPENT**



2 x Singles



5 x Singles

### Features:

- Black polypropylene 25mm glides.
- Commercial grade foam.
- Commercial grade timber frame (refer to page 9).
- Top stitched upholstered cover.

### Options:

- Choice of fabric (refer to page 10).
- Optional glides (refer to page 9).

### Weight:

- 120kg.

### Warranty:

- 5 year.



## Polygon

### Features:

- Black polypropylene 25mm glides.
- Commercial grade foam.
- Commercial grade timber frame (refer to page 9).
- Top stitched upholstered cover.

### Options:

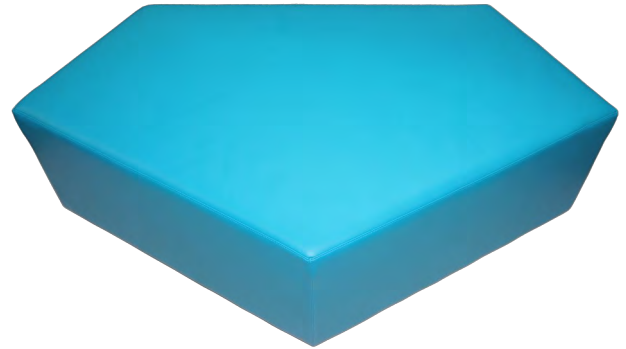
- Choice of fabric (refer to page 10).
- Optional glides (refer to page 9).

### Weight:

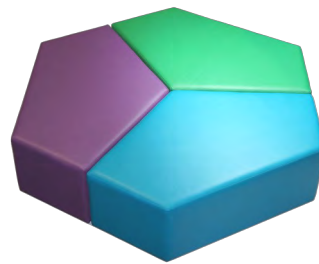
- 120kg per seat (based on average width of 500 - 600mm).

### Warranty:

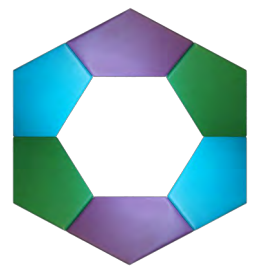
- 5 year.



**OTTPOL**  
Single



3 x Singles



6 x Singles

## Quad

### Features:

- Black polypropylene 25mm glides.
- Commercial grade foam.
- Commercial grade timber frame (refer to page 9).
- Top stitched upholstered cover.

### Options:

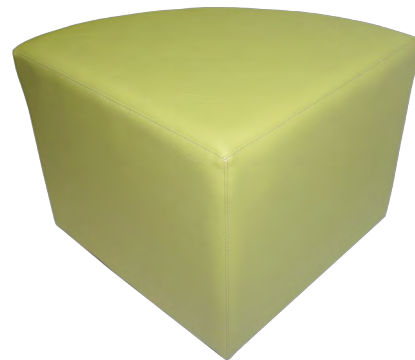
- Choice of fabric (refer to page 10).
- Optional glides (refer to page 9).

### Weight:

- 120kg.

### Warranty:

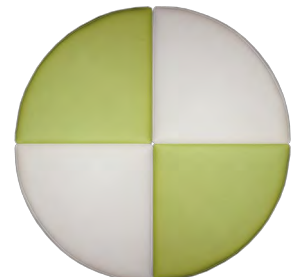
- 5 year.



**OTTQUAD**  
Single



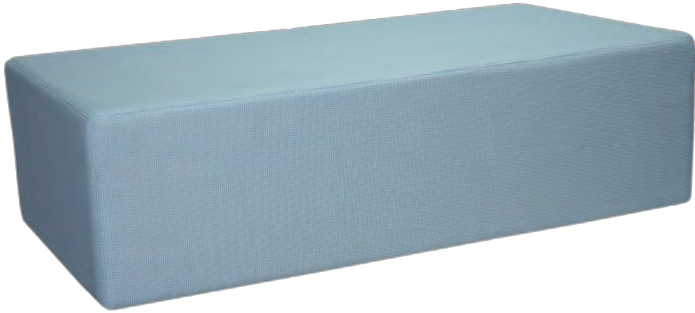
2 x Singles



4 x Singles



## Rectangular



OTTRECT

**Features:**

- Black polypropylene 25mm glides.
- Commercial grade foam.
- Commercial grade timber frame (refer to page 9).
- Cosmetic stitching on seat (on units 1mtr and above).
- Top stitched upholstered cover.

**Options:**

- Choice of fabric (refer to page 10).
- Custom sizes.
- Optional glides (refer to page 9).
- Seat piping.

**Weight:**

- 120kg per seat (based on average width of 500 - 600mm).

**Warranty:**

- 5 year.



## Square



OTTSQ

**Features:**

- Black polypropylene 25mm glides.
- Commercial grade foam.
- Commercial grade timber frame (refer to page 9).
- Top stitched upholstered cover.

**Options:**

- Choice of fabric (refer to page 10).
- Custom sizes.
- Optional glides (refer to page 9).

**Weight:**

- 120kg.

**Warranty:**

- 5 year.





## Tear

### Features:

- Black polypropylene 25mm glides.
- Commercial grade foam.
- Commercial grade timber frame (refer to page 9).
- Top stitched upholstered cover.

### Options:

- Choice of fabric (refer to page 10).
- Optional glides (refer to page 9).

### Weight:

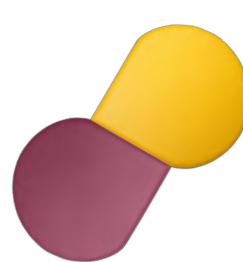
- 120kg.

### Warranty:

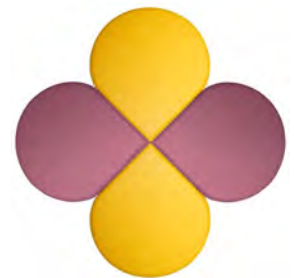
- 5 year.



**OTTTEAR**  
Single



2 x Singles



4 x Singles

## All ottomans are manufactured to a strict commercial standard and incorporate the following premium materials:

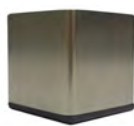
- **Top and Bottom** Solid 18mm MDF (CNC cut to ensure shape consistency).
- **Internal Rails** Structural grade 70mm X 45mm pine rails at 350mm to 400mm spans (depending on the ottoman size).
- **External Walls** Straight edges are reinforced using a 3mm MDF. Curved edges are reinforced with either a single or double layer of high strength Box-Board (1800 ums).
- **Seat Foam** Premium 100mm Heavy duty commercial foam (10 year warranty). GECA approved.
- **Wall Foam** 12mm Premium commercial foam. GECA approved.
- **Upholstery** All seat tops are bonded to an additional 9mm foam, covers are top stitched and overlapped where required.
- **Underside** The underside upholstery is finished in premium 150GSM Marix, giving extra protection against accidental tearing.
- **Feet** Choice of either a 25mm H (435mm finished height) or 60mm H (470mm finished height) black glide, attached using a wafer screw. Other optional feet styles are also available.
- **Sizes** For a complete list of sizes and dimensions please visit [www.officeseating.com.au](http://www.officeseating.com.au)

Due to our policy of continuous product improvement, O.S.A Pty. Ltd. reserves the right to make changes on specifications without notice.

## Glides



**SFTGL/SSRND**  
(round stainless steel  
50dia x 50mmH)



**SFTGL/SS**  
(square stainless steel  
50 x 50 x 50mmH)



**SFTGL25**  
(standard plastic glide  
50dia x 25mmH)



**SFTGL60**  
(high plastic glide  
50dia x 60mmH)

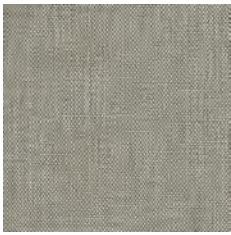


Proudly 100%  
Australian Owned

**ENQUIRES: 03 9761 7110**  
**WWW.OFFICESEATING.COM.AU**

## House Fabrics

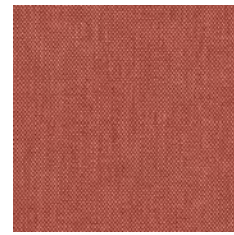
Fabric colours shown are an indication and should only be used as a guide.



**Birch**



**Citrus**



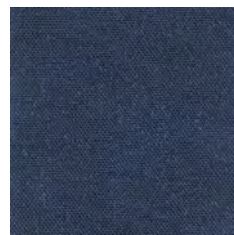
**Fire**



**Poppy**



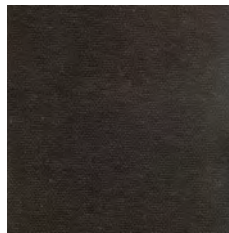
**Teal**



**Navy**



**Falcon**



**Carbon**



**Hathaway  
Charcoal**



**Hathaway  
Navy**

**Content:** 100% Polyester    **Width:** 137cm

**Performance:** Heavy Commercial

## Fabric Suppliers

**Innova:** [innova.com.au](http://innova.com.au)  
**Instyle:** [instyle.com.au](http://instyle.com.au)  
**Laine:** [laine.com.au](http://laine.com.au)  
**Sustainable Living:** [sustainablelivingfabrics.com.au](http://sustainablelivingfabrics.com.au)  
**Macquarie:** [macquarietextiles.com.au](http://macquarietextiles.com.au)

**Svenska:** [svenskakj.com.au](http://svenskakj.com.au)  
**Vyfab:** [vyfab.com](http://vyfab.com)  
**Warwick:** [warwick.com.au](http://warwick.com.au)  
**Wortley:** [wgshowroom.com.au](http://wgshowroom.com.au)  
**Woven Image:** [wovenimage.com](http://wovenimage.com)

Most commonly used fabric suppliers.



**Beam Seating**



**Clerical & Managerial**



**Education**



**Executive**



**Healthcare**



**Hospitality**



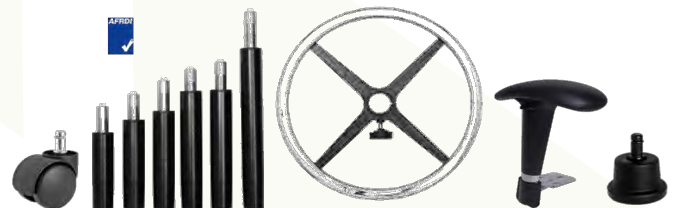
**Soft Furnishings**



**Stools**



**Visitor**



**Accessories**



Distributed by:



**YOUR SEATING SOLUTION SPECIALISTS**

© 2017 OSA All Rights Reserved

Rev\_OTT002