



STOOLS



YOUR SEATING SOLUTION SPECIALISTS



Proudly 100%
Australian Owned



Carla Low Back Stool



CARSTLB



CARSTLB/W
White laminate

Features:

- One piece seat and back.

Frame:

- 4 leg - tubular steel.
- Chrome finish.

Seat and back:

- Timber veneer.
- Colours: Natural, wenghe, zebra or white laminate.

Options:

- 650mm or 750mm seat height.

Weight:

- 100kg.

Warranty:

- 1 year.



WEIGHT RATING
KGS



WARRANTY

Carla High Back Stool



CARSTHB

Features:

- One piece seat and back.

Frame:

- 4 leg - tubular steel.
- Chrome finish.

Seat and back:

- Timber veneer.
- Colours: Natural, wenghe, zebra or white laminate.

Options:

- 650mm or 750mm seat height.

Weight:

- 100kg.

Warranty:

- 1 year.



WEIGHT RATING
KGS



WARRANTY

Colorado Stool

Features:

- Commercial grade foam.

Frame:

- 4 leg - tubular steel.

Seat and back:

- Upholstered seat.

Options:

- 650mm or 750mm seat height.

- **COLSTU1**

Back: Natural oak.

Frame: Black, charcoal or cool grey powder coat.

Seat: Black, charcoal or white vinyl.

- **COLSTU2**

Back: Walnut.

Frame: Black powder coat.

Seat: Black vinyl.

Weight:

- 100kg.

Warranty:

- 1 year.



COLSTU1
White vinyl seat
with cool grey powder coat finish



COLSTU2
Black vinyl seat
with black powder coat finish

Dove Stool

Features:

- Commercial grade foam.

Frame:

- 4 leg - brushed stainless steel.

Seat and back:

- Fully upholstered - black vinyl.

Options:

- 660mm or 760mm height.

Weight:

- 100kg.

Warranty:

- 1 year.



DOVST



Proudly 100%
Australian Owned

ENQUIRES: 03 9761 7110
WWW.OFFICESEATING.COM.AU

Elite Stool



ELISTUPH2



ELISTVEN
Natural oak seat
with optional chrome finish

Features:

- 680mm seat height.

Frame:

- Sled - rod steel.
- Black powder coat finish.

Seat:

- Timber veneer seat - natural oak.
- Upholstered seat - black or white vinyl.

Options:

- Chrome finish.
- Walnut timber veneer seat.
- White powder coat finish.

Weight:

- 100kg.

Warranty:

- 1 year.



Ergo Saddle Stool



ERGSADBACK



ERGSAD

Features:

- Chrome base with stainless steel hooded castors.
- Chrome height adjustable 140mm gas lift.
- Ergonomic 2 lever mechanism.
- Moulded seat foam.
- Seat tilt adjustment.

Seat and back:

- Fully upholstered long nose seat and back - black vinyl.
- Chrome back upright bar.

Options:

- **ERGSAD** model available in short nose only.
- **ERGSADBACK** model available in short or long nose.

Weight:

- 110kg.

Warranty:

- 3 year.



Fleur Stool

Features:

- 780mm seat height.
- Suitable for outdoor use.
- UV resistant.

Frame:

- 4 leg - tubular aluminum.

Seat and back:

- Synthetic wicker with wire core.
- Colours: Black, coffee, honey or navy blue.

Weight:

- 100kg.

Warranty:

- 2 year.



FLEURST

Haley Stool

Features:

- Mesh look back.
- Stackable.
- Suitable for outdoor use.
- Two piece polypropylene seat.

Frame:

- 4 leg - tubular steel.
- Chrome finish.

Seat and back:

- Polypropylene.
- Colours: Black, blue, green, grey, red or white.

Options:

- Choice of fabric (refer to page 16).
- Seat and or back upholstery.

Weight:

- 110kg.

Warranty:

- 5 year.



HALST/S
Seat upholstery



HALST
No upholstery

Hamilton Bar Stool



HSB

Features:

- Chrome narrow leg base with button glides.
- Chrome stem and fixed foot ring.
- Swivel plate.

Seat:

- Fully upholstered.

Options:

- Choice of fabric (refer to page 16).

Weight:

- 110kg.

Warranty:

- 5 year.



Hamilton Drafting Stool



HSD



HST
(140mm Gas)

Features:

- Black 270mm height adjustable gas lift.
- Black base and castors.
- Chrome adjustable foot ring.
- Single lever mechanism.

Seat:

- Fully upholstered.

Options:

- Alternate black or chrome bases (refer to page 17).
- Alternate black or chrome gas lifts (refer to page 17).
- Alternate castors or glides (refer to page 17).
- Choice of fabric (refer to page 16).

Weight:

- 110kg.

Warranty:

- 5 year.



Hunter Stool

Features:

- Stackable.

Frame:

- Sled - rod steel.
- Chrome finish.

Seat and back:

- Moulded polypropylene.
- Colours: Black or white.

Options:

- Choice of fabric (refer to page 16).
- Seat and or back upholstery.

Weight:

- 110kg.

Warranty:

- 5 year.



HUNST/S
Seat upholstery



HUNST
No upholstery



HUNST/B
Back upholstery

Lark Stool

Features:

- One piece shell.
- Stackable.
- Suitable for outdoor use.
- UV protected, 100% recyclable.

Frame:

- 4 leg - stainless steel.

Seat and back:

- Moulded polypropylene.
- Colours: Avocado, black, blue, chocolate, latte, orange, red or white.

Options:

- Choice of fabric (refer to page 16).
- Seat upholstery.

Weight:

- 100kg.

Warranty:

- 3 year.



LARKST/S
Seat upholstery



LARKST
No upholstery



Lucy Stool



LUCYST

Features:

- One piece ply.
- Stackable.

Frame:

- 4 leg - tubular steel.
- Chrome finish.

Seat and back:

- Laminated timber.
- Colours: Natural, wenghe or zebra.

Weight:

- 100kg.

Warranty:

- 1 year.



Maddison Stool



MST
Round back



MSTSQ
Square back

Features:

- Commercial grade foam.
- Stackable.

Frame:

- 4 leg - welded tubular steel.
- Black powder coat finish.

Seat and back:

- Fully upholstered.

Options:

- Choice of fabric (refer to page 16).
- Chrome finish.
- Non-slip rubber feet.
- Round or square back.

Weight:

- 120kg.

Warranty:

- 5 year.



Maddison Drop Arm Stool

Features:

- Commercial grade foam.
- Polyurethane drop arm.

Frame:

- 4 leg - welded tubular steel.
- Black powder coat finish.

Seat and back:

- Fully upholstered.

Options:

- Choice of fabric (refer to page 16).
- Chrome finish.
- Non-slip rubber feet.
- Round or square back.

Weight:

- 120kg.

Warranty:

- 5 year.



MSTDASQ/C
Square back drop arms
with optional chrome finish



MSTDA
Round back drop arms
with optional chrome finish

Medical Stool Drafting

Features:

- Antibacterial moulded foam.
- Antibacterial, stain, bleach and alcohol resistant vinyl.
- Chrome adjustable foot ring.
- Chrome base.
- Chrome height adjustable 270mm gas lift.
- PU soft wheel castors.
- Single lever mechanism.

Seat:

- Fully upholstered.

Options:

- Alternate chrome gas lift (refer to page 17).
- Choice of Wortley Studio Encore vinyl range.

Weight:

- 110kg.

Warranty:

- 5 year.



MSD



MST
(140mm Gas)

Moona Drafting Stool



MOOND

Features:

- Black 270mm height adjustable gas lift.
- Black base and castors.
- Chrome adjustable foot ring.
- Commercial grade foam.
- Cosmetic stitching.
- One piece ply.
- Single lever mechanism.

Seat and back:

- Fully upholstered.

Options:

- Alternate black or chrome bases (refer to page 17).
- Alternate black or chrome gas lifts (refer to page 17).
- Alternate castors or glides (refer to page 17).
- Choice of fabric (refer to page 16).

Weight:

- 120kg.

Warranty:

- 3 year.



Moona Low Back Stool



MOONLB

Features:

- Commercial grade foam.
- Cosmetic stitching.
- One piece ply.
- Stackable.

Frame:

- Sled - tubular steel.
- Chrome finish.

Seat and back:

- Fully upholstered.

Options:

- 650mm or 750mm seat height.
- Choice of fabric (refer to page 16).

Weight:

- 120kg.

Warranty:

- 5 year.



Moona High Back Stool

Features:

- Commercial grade foam.
- Cosmetic stitching.
- One piece ply.
- Stackable.

Frame:

- Sled - tubular steel.
- Chrome finish.

Seat and back:

- Fully upholstered.

Options:

- 650mm or 750mm seat height.
- Choice of fabric (refer to page 16).

Weight:

- 120kg.

Warranty:

- 5 year.



MOONHB

PU Drafting Stool

Features:

- Black 270mm height adjustable gas lift.
- Black base and castors.
- Chrome adjustable foot ring.
- Ring activated, swivel plate mechanism.

Seat:

- Black polyurethane.

Options:

- Alternate black or chrome bases (refer to page 17).
- Alternate black or chrome gas lifts (refer to page 17).
- Alternate castors or glides (refer to page 17).

Weight:

- 110kg.

Warranty:

- 3 year.



PSD

PST
(140mm Gas)

PU Industrial Drafting Stool



PUD

Features:

- Black 270mm height adjustable gas lift.
- Black base and castors.
- Chrome adjustable foot ring.
- Ergonomic 3 lever heavy duty mechanism with tension adjustment.

Seat and back:

- Black polyurethane.

Options:

- Alternate black or chrome bases (refer to page 17).
- Alternate black or chrome gas lifts (refer to page 17).
- Alternate castors or glides (refer to page 17).

Weight:

- 120kg.

Warranty:

- 3 year.



PU Large Industrial Stool



PULD

Features:

- Black 270mm height adjustable gas lift.
- Black base and castors.
- Chrome adjustable foot ring.
- Ergonomic 3 lever heavy duty mechanism with tension adjustment.
- Large seat.
- Tulip shaped back.

Seat and back:

- Black polyurethane.

Options:

- Alternate black or chrome bases (refer to page 17).
- Alternate black or chrome gas lifts (refer to page 17).
- Alternate castors or glides (refer to page 17).

Weight:

- 120kg.

Warranty:

- 3 year.



PU Square Industrial Stool

Features:

- Black 270mm height adjustable gas lift.
- Black base and castors.
- Chrome adjustable foot ring.
- Ergonomic 3 lever heavy duty mechanism with tension adjustment.
- Square style seat and back.

Seat and back:

- Black polyurethane.

Options:

- Alternate black or chrome bases (refer to page 17).
- Alternate black or chrome gas lifts (refer to page 17).
- Alternate castors or glides (refer to page 17).

Weight:

- 120kg.

Warranty:

- 3 year.



PUSQD
with optional glides

PU Sit Drafting Stool

Features:

- Black 270mm height adjustable gas lift.
- Black base and castors.
- Chrome adjustable foot ring.
- Ergonomic 2 lever mechanism.
- Seat tilt adjustment.

Seat:

- Black polyurethane.

Options:

- Alternate black or chrome bases (refer to page 17).
- Alternate black or chrome gas lifts (refer to page 17).
- Alternate castors or glides (refer to page 17).

Weight:

- 110kg.

Warranty:

- 3 year.



PUSITD



PUSIT
(200mm Gas)

PU Saddle Drafting Stool



PUSADD



PUSAD
(200mm Gas)

Features:

- Black base and chrome castors.
- Chrome 270mm height adjustable gas lift.
- Chrome adjustable foot ring.
- Ring activated mechanism.
- Saddle style seat.

Seat:

- Black polyurethane.

Options:

- Alternate black or chrome bases (refer to page 17).
- Alternate black or chrome gas lifts (refer to page 17).
- Alternate castors or glides (refer to page 17).

Weight:

- 110kg.

Warranty:

- 3 year.



PU Stand Drafting Stool



PUSTANDD



PUSTAND
(200mm Gas)

Features:

- Black 270mm height adjustable gas lift.
- Black base and castors.
- Chrome adjustable foot ring.
- Ergonomic 2 lever mechanism.
- Seat tilt adjustment.

Seat:

- Black polyurethane.

Options:

- Alternate black or chrome bases (refer to page 17).
- Alternate black or chrome gas lifts (refer to page 17).
- Alternate castors or glides (refer to page 17).

Weight:

- 110kg.

Warranty:

- 3 year.



PU Tractor Drafting Stool

Features:

- Black 270mm height adjustable gas lift.
- Black base and castors.
- Chrome adjustable foot ring.
- Large tractor style seat.
- Ring activated mechanism.

Seat:

- Black polyurethane.

Options:

- Alternate black or chrome bases (refer to page 17).
- Alternate black or chrome gas lifts (refer to page 17).
- Alternate castors or glides (refer to page 17).

Weight:

- 110kg.

Warranty:

- 3 year.



PUTRAC
(200mm Gas)

PUTRACD

Suzie Stool

Features:

- Commercial grade foam.

Frame:

- 4 leg - square tubular brushed stainless steel finish.

Seat:

- Upholstered vinyl seat.
- Colours: Black, blue, brown, green, off-white, orange or red.

Options:

- 650mm or 750mm seat height.
- Polished stainless finish.

Weight:

- 100kg.

Warranty:

- 1 year.



SUZIE
Brushed stainless finish.

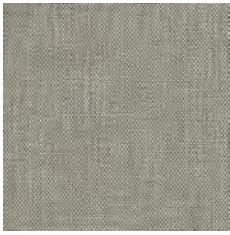


Proudly 100%
Australian Owned

ENQUIRES: 03 9761 7110
WWW.OFFICESEATING.COM.AU

OSA House Fabrics

Fabric colours shown are an indication and should only be used as a guide.



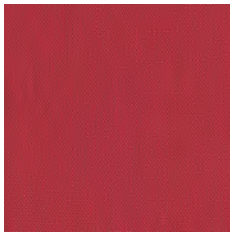
Birch



Citrus



Fire



Poppy



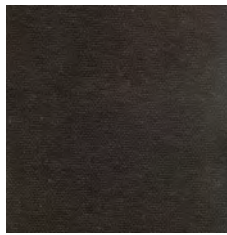
Teal



Navy



Falcon



Carbon



**Hathaway
Charcoal**



**Hathaway
Navy**

Content: 100% Polyester **Width:** 137cm

Performance: Heavy Commercial

Fabric Suppliers

Innova: innova.com.au
Instyle: instyle.com.au
Laine: laine.com.au
Sustainable Living: sustainablelivingfabrics.com.au
Macquarie: macquarietextiles.com.au

Svenska: svenskakj.com.au
Vyfab: vyfab.com
Warwick: warwick.com.au
Wortley: wgshowroom.com.au
Woven Image: wovenimage.com

Most commonly used fabric suppliers.

Components



Standard - Black Bases

BASE540B 540mm Diam.
BASE640B/2 640mm Diam. (AFRDI approved)
BASE700B 700mm Diam.



Standard - Chrome Bases

BASE600C 600mm Diam.
BASE660C 660mm Diam.
BASE700C 700mm Diam. (AFRDI approved)



Narrow Leg Arch - Black Base

BASE690B 690mm Diam.



Narrow Leg Arch - Chrome Base

BASE660C 660mm Diam.



Black castors

CAST50 50mm Standard - 30kg.
 (AFRDI approved)
CAST60 60mm Standard - 40kg.
CASTF 50mm Friction - 30kg.
 (restricts movement when unseated)
CASTHD 50mm Heavy Duty - 60kg.
CASTLB 50mm Load Brake - 30kg.
 (restricts movement when seated)
CASTMB 50mm Manual Brake - 30kg.
 (manually lockable to stop all movement)



Single Wheel Skate Castor

CASTSK 75mm Clear Polyurethane - 60kg.
 (non marking).



Soft Wheel / PU Castors

CASTSW 50mm with PU Tread - 30kg.
 (AFRDI approved)
CASTSWF 50mm Friction with PU Tread - 30kg.
 (restricts all movement).
CASTSWLB 50mm Load Brake with PU Tread - 30kg.
 (restricts movement when seated).
CASTSWULB 50mm Unload Brake with PU Tread - 30kg.
 (restricts movement when unseated).
CASTMB 50mm Manual Brake with PU Tread - 30kg.
 (manually lockable to stop all movement).



Black Unhooded Castor

CASTUH 50mm Unhooded - 30kg.



Black Glide

CASTGL 57mm Diameter.



Chrome Castor

CASTCHR 50mm Chrome look Hood & Shroud -



Stainless Steel Hooded Castor

CASTSS 50mm Polished Stainless Steel Hood - 30kg.



Drafting Kits

DKIT 270mm Black Gas & Foot Ring
DKITCHR 270mm Chrome Gas & Foot Ring



Gas Lifts - Black

GL80B 80mm
GL100B 100mm
GL140B 140mm
GL200B 200mm
GL270B 270mm
 (AFRDI approved)

GL140BH/D 140mm - Heavy Duty



Gas Lifts - Chrome

GL80C 80mm
GL100C 100mm
GL140C 140mm
GL200C 200mm
GL270C 270mm
 (AFRDI approved)



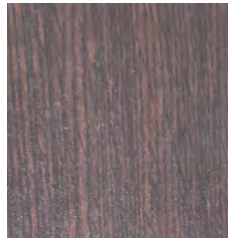
Proudly 100%
 Australian Owned

ENQUIRES: 03 9761 7110
WWW.OFFICESEATING.COM.AU

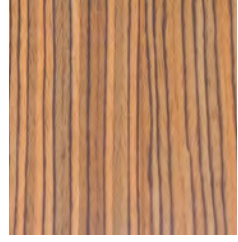
Veneer Colours



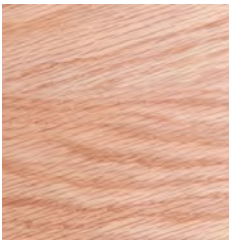
Natural



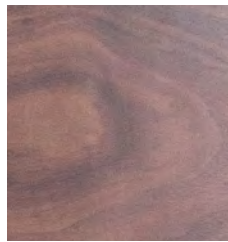
Wenghe



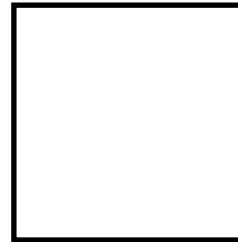
Zebra



Natural Oak



Walnut



HPL White

Veneer colours shown will vary depending on the type of timber and the timber grain.
These images are an indication and should only be used as a guide.

All chairs are 100% Australian manufactured to the highest standard and incorporate the following premium materials:

- Commercial grade timber and steel frames.
- Premium commercial grade foam.
- Upholstered covers are overlapped where required to stop fraying.
- Upholstered covers are top stitched for additional strength where required.
- For a complete list of sizes and dimensions please visit www.officeseating.com.au
- All products are suitable for multiple applications, ranging from but not limited to education, general office, healthcare and hospitality.

Due to our policy of continuous product improvement, O.S.A Pty. Ltd. reserves the right to make changes on specifications without notice.



Beam Seating



Clerical & Managerial



Education



Executive



Healthcare



Hospitality



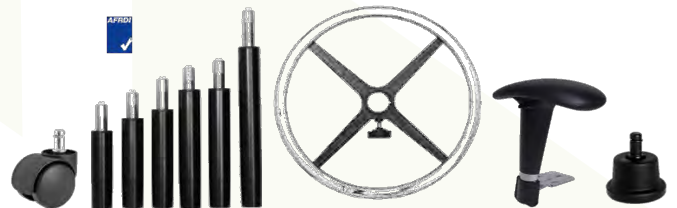
Ottoman



Soft Furnishings



Visitor



Accessories



Distributed by:



YOUR SEATING SOLUTION SPECIALISTS

© 2017 OSA All Rights Reserved

Rev_ST002