



## SOFT FURNISHINGS



**YOUR SEATING SOLUTION SPECIALISTS**



Proudly 100%  
Australian Owned



## Avian



**AV01**  
Single seat

**Features:**

- Commercial grade foam.
- Commercial grade timber frame.
- Polished timber front facings.
- Polished timber legs with button glides.

**Seat and back:**

- Fully upholstered.

**Options:**

- Choice of fabric (refer to page 16).
- Choice of stain colours (refer to page 15).
- Interchangeable legs (refer to page 15).

**Weight:**

- 120kg.

**Warranty:**

- 3 year.



## Banquette



**BANQ1200**

**Features:**

- Black laminate kicker.
- Commercial grade foam.
- Commercial grade timber frame.

**Seat and back:**

- Fully upholstered.

**Options:**

- BANQ1800, BANQ2000, BANQ2400, BANQ3000, BANQ3600.
- Choice of fabric (refer to page 16).
- Contrasting fabric on seat and back.
- Custom lengths.
- Interchangeable legs (refer to page 15).

**Weight:**

- 120kg per seat (based on average width of 500 - 600mm).

**Warranty:**

- 3 year.



## Bev

### Features:

- Commercial grade foam.
- Commercial grade timber frame.
- Piping on seat front and inside back.
- Polished timber legs and front facings with button glides.

### Seat and back:

- Fully upholstered.

### Options:

- Choice of fabric (refer to page 16).
- Choice of stain colours (refer to page 15).

### Weight:

- 120kg per seat (based on average width of 500 - 600mm).

### Warranty:

- 3 year.



**BEV01**  
Single seat



**BEV02**  
2 Seater

## Booth

### Features:

- Commercial grade foam.
- Commercial grade timber frame.
- Stainless steel glides.

### Seat and back:

- Fully upholstered.

### Options:

- Booth 2000.
- Choice of fabric (refer to page 16).
- Chrome leg underframe.
- Contrasting fabrics.
- Medium, standard and high back.

### Weight:

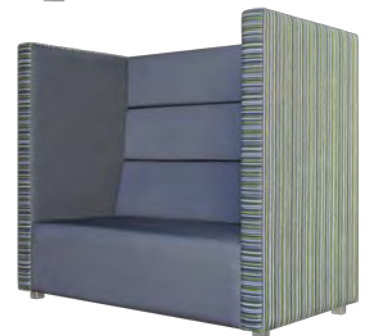
- 120kg per seat (based on average width of 500 - 600mm).

### Warranty:

- 3 year.



**BOOTH1000**



**BOOTH1500**



## Cherry



**CHER01**  
Single seat



**CHER02**  
2 Seater

### Features:

- Black polypropylene glides.
- Commercial grade foam.
- Commercial grade timber frame.

### Seat and back:

- Fully upholstered.

### Options:

- Choice of fabric (refer to page 16).
- Stainless steel glides (refer to page 15).

### Weight:

- 150kg per seat (based on average width of 500 - 600mm).

### Warranty:

- 3 year.



## Cube



**CUBE01**  
Single seat



**CUBE02**  
2 Seater

### Features:

- Black polypropylene glides.
- Commercial grade foam.
- Commercial grade timber frame.

### Seat and back:

- Fully upholstered.

### Options:

- Choice of fabric (refer to page 16).
- Stainless steel glides (refer to page 15).

### Weight:

- 120kg per seat (based on average width of 500 - 600mm).

### Warranty:

- 3 year.



## Darling

### Features:

- Back lumbar support.
- Commercial grade foam.
- Commercial grade timber frame.
- Polished timber legs with button glides.

### Seat and back:

- Fully upholstered.

### Options:

- Choice of fabric (refer to page 16).
- Choice of stain colours (refer to page 15).
- Linking clips.
- Single left or right arm.

### Weight:

- 120kg per seat.

### Warranty:

- 3 year.



**DAR**  
Single no arm



**DARA**  
Single with arms



**DARA02**  
2 x single darling arm joined with optional linking clips

## Dixie

### Features:

- Additional premium comfort foam.
- Commercial grade foam.
- Commercial grade timber frame.
- Cosmetic stitching on seat and back.
- Polished timber legs with button glides.

### Seat and back:

- Fully upholstered.

### Options:

- Choice of fabric (refer to page 16).
- Choice of stain colours (refer to page 15).

### Weight:

- 120kg.

### Warranty:

- 3 year.



**DIX01**  
Single seat



## Elle



**ELL01**  
Single seat

**Features:**

- Aluminum square legs.
- Commercial grade foam.
- Commercial grade timber frame.

**Seat and back:**

- Fully upholstered.

**Options:**

- Choice of fabric (refer to page 16).
- Interchangeable legs (refer to page 15).

**Weight:**

- 120kg.

**Warranty:**

- 3 year.



## Kara



**KARA01**  
Single seat



**KARACRN**  
Corner chair

**Features:**

- Commercial grade foam.
- Commercial grade timber frame.
- Stainless steel glides.

**Seat and back:**

- Fully upholstered.

**Options:**

- Choice of fabric (refer to page 16).
- Linking clips.

**Weight:**

- 120kg.

**Warranty:**

- 3 year.



## Kitty

### Features:

- Commercial grade foam.
- Commercial grade timber frame.
- Polished timber legs with button glides.

### Seat and back:

- Fully upholstered.

### Options:

- Choice of fabric (refer to page 16).
- Choice of stain colours (refer to page 15).

### Weight:

- 120kg per seat (based on average width of 500 - 600mm).

### Warranty:

- 3 year.



**KITTY01**  
Single seat



**KITTY02**  
2 Seater

## Lily

### Features:

- Commercial grade foam.
- Commercial grade timber frame.
- Polished timber legs with button glides.

### Seat and back:

- Fully upholstered.

### Options:

- Choice of fabric (refer to page 16).
- Choice of stain colours (refer to page 15).

### Weight:

- 120kg.

### Warranty:

- 3 year.



**LILY01**  
Single seat



## Mantra



**MAN01**  
Single seat



**MAN02**  
2 Seater

**Features:**

- Commercial grade foam.
- Commercial grade timber frame.
- Polished timber legs with button glides.

**Seat and back:**

- Fully upholstered.

**Options:**

- MAN02.5 (2.5 seater) and MAN03.5 (3.5 seater).
- Choice of fabric (refer to page 16).
- Choice of stain colours (refer to page 15).

**Weight:**

- 120kg per seat (based on average width of 500 - 600mm).

**Warranty:**

- 3 year.



## Metro



**MET01**  
Single seat



**MET02**  
2 Seater

**Features:**

- Black polypropylene glides.
- Commercial grade foam.
- Steel frame with timber base rail and seat.

**Seat and back:**

- Fully upholstered.

**Options:**

- Choice of fabric (refer to page 16).

**Weight:**

- 110kg per seat (based on average width of 500 - 600mm).

**Warranty:**

- 3 year.





## Munro

### Features:

- Commercial grade foam.
- Commercial grade timber frame.
- Piping on inside back and arm facings.
- Polished timber legs with button glides.

### Seat and back:

- Fully upholstered.

### Options:

- MUN2.5 (2.5 seater).
- Choice of fabric (refer to page 16).
- Choice of stain colours (refer to page 15).

### Weight:

- 120kg per seat (based on average width of 500 - 600mm).

### Warranty:

- 3 year.



**MUN01**  
Single seat



**MUN02**  
2 Seater

## Munro Deluxe

### Features:

- Commercial grade foam.
- Commercial grade timber frame.
- Piping on seat front, inside back and arm facings.
- Polished timber legs with button glides.

### Seat and back:

- Fully upholstered.

### Options:

- MUND02 (2 seater).
- Choice of fabric (refer to page 16).
- Choice of stain colours (refer to page 15).

### Weight:

- 120kg per seat (based on average width of 500 - 600mm).

### Warranty:

- 3 year.



**MUND01**  
Single seat



**MUND02.5**  
2.5 Seater



## Murray



**MURRAY**  
Single seat

**Features:**

- Commercial grade foam.
- Commercial grade timber frame.
- Polished timber base and legs with button glides.
- Tri-layer back foam and head lumbar.
- Tri-layer seat foam.

**Seat and back:**

- Fully upholstered.

**Options:**

- Choice of fabric (refer to page 16).
- Choice of stain colours (refer to page 15).

**Weight:**

- 120kg.

**Warranty:**

- 3 year.



## Profile Metal



**PROF01**  
Single seat



**PROF02**  
2 seater

**Features:**

- Commercial grade foam.
- 4 leg - round steel frame.
- Chrome finish.

**Seat and back:**

- Fully upholstered.

**Options:**

- Black powder coat finish.
- Choice of fabric (refer to page 16).
- Square leg fame.

**Weight:**

- 150kg per seat (based on average width of 500 - 600mm).

**Warranty:**

- 3 year.



## Samara

### Features:

- Commercial grade foam.
- Commercial grade timber frame.
- Polished timber legs with button glides.
- Upholstered arms.

### Seat and back:

- Fully upholstered.

### Options:

- Choice of fabric (refer to page 16).
- Choice of stain colours (refer to page 15).

### Weight:

- 120kg.

### Warranty:

- 3 year.



**SAM-ARM**  
With arm



**SAM**  
No arm

## Solaris Curved

### Features:

- Black polypropylene glides.
- Commercial grade foam.
- Commercial grade timber frame.

### Seat and back:

- Fully upholstered.

### Options:

- Choice of fabric (refer to page 16).
- Linking clips.
- Stainless steel glides (refer to page 15).

### Weight:

- 150kg per seat (based on average width of 500 - 600mm).

### Warranty:

- 3 year.



**SOLARIS**



**SOLINVERT**



## Solaris Bench



**SOLB1200**



**SOLB1800**

**Features:**

- Black polypropylene glides.
- Commercial grade foam.
- Commercial grade timber frame.

**Seat and back:**

- Fully upholstered.

**Options:**

- Choice of fabric (refer to page 16).
- Linking clips.
- Stainless steel glides (refer to page 15).

**Weight:**

- 150kg per seat (based on average width of 500 - 600mm).

**Warranty:**

- 3 year.



## Solaris Corner



**SOLCRN970**



**SOLCRN1200**

**Features:**

- Black polypropylene glides.
- Commercial grade foam.
- Commercial grade timber frame.

**Seat and back:**

- Fully upholstered.

**Options:**

- Choice of fabric (refer to page 16).
- Linking clips.
- Stainless steel glides (refer to page 15).

**Weight:**

- 150kg per seat (based on average width of 500 - 600mm).

**Warranty:**

- 3 year.



## Tia

### Features:

- Commercial grade foam.
- Commercial grade timber frame.
- Polished timber legs with button glides.

### Seat and back:

- Fully upholstered.

### Options:

- TIA02 (2 seater).
- Choice of fabric (refer to page 16).
- Choice of stain colours (refer to page 15).
- Chrome sled or leg underframe.
- Interchangeable legs (refer to page 15).
- Linking clips.

### Weight:

- 120kg per seat (based on average width of 500 - 600mm).

### Warranty:

- 3 year.



**TIA01**  
Single seat



**TIA03**  
3 Seater with  
optional stainless steel legs

## Tia Arm

### Features:

- Commercial grade foam.
- Commercial grade timber frame.
- Polished timber legs with button glides.

### Seat and back:

- Fully upholstered.

### Options:

- TIA03ARM (3 seater).
- Choice of fabric (refer to page 16).
- Choice of stain colours (refer to page 15).
- Chrome sled or leg underframe.
- Interchangeable legs (refer to page 15).

### Weight:

- 120kg per seat (based on average width of 500 - 600mm).

### Warranty:

- 3 year.



**TIA01ARM**  
Single seat



**TIA02ARM**  
2 Seater



## Tosc Profile Timber



**TOSCPRO**  
Single seat

### Features:

- Commercial grade foam.
- Commercial grade timber frame.
- Polished timber legs with button glides.

### Seat and back:

- Fully upholstered.

### Options:

- Choice of fabric (refer to page 16).
- Choice of stain colours (refer to page 15).
- Linking clips.

### Weight:

- 120kg.

### Warranty:

- 3 year.



**All chairs are 100% Australian manufactured to the highest standard and incorporate the following premium materials:**

- Commercial grade timber and steel frames.
- Premium commercial grade foam. GECA approved.
- Upholstered covers are overlapped where required to stop fraying.
- Upholstered covers are top stitched for additional strength where required.
- Legs are available in various styles, sizes and finishes.
- For a complete list of sizes and dimensions please visit [www.officeseating.com.au](http://www.officeseating.com.au)
- All products are suitable for multiple applications, ranging from but not limited to education, general office, healthcare and hospitality.

Due to our policy of continuous product improvement, O.S.A Pty. Ltd. reserves the right to make changes on specifications without notice.

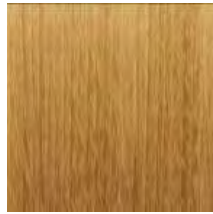
## Stain Colours



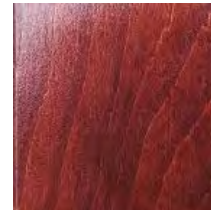
**Chocolate**



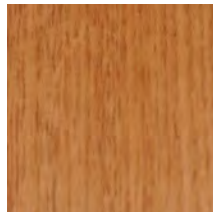
**Walnut**



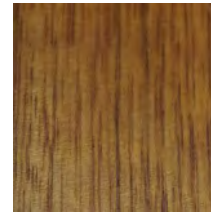
**Clear / Natural**



**Mahogany**



**Beech**



**Teak**

Stain colours shown will vary depending on the type of timber and the timber grain.  
These images are an indication and should only be used as a guide.

Colour matching is available on request.

## Interchangeable Legs



**LEGSSROUND**  
(round stainless steel  
50dia x 125mmH)



**LEGSSSQ**  
(square stainless steel  
50 x 50 x 125mmH)



**LEGTSQ**  
(timber tapered  
60-45 x 110mmH)



**LEGARND**  
(round aluminum  
60dia x 100mmH)



**LEGASQ**  
(square aluminum  
50 x 50 x 125mmH)

**Note:** Chairs must support interchangeable legs as an option.

## Glides



**SFTGL/SSRND**  
(round stainless steel  
50dia x 50mmH)



**SFTGL/SS**  
(square stainless steel  
50 x 50 x 50mmH)



**SFTGL25**  
(standard plastic glide  
50dia x 25mmH)



**SFTGL60**  
(high plastic glide  
50dia x 60mmH)



Proudly 100%  
Australian Owned

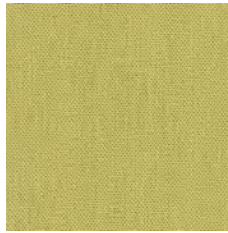
ENQUIRES: 03 9761 7110  
WWW.OFFICESEATING.COM.AU

## OSA House Fabrics

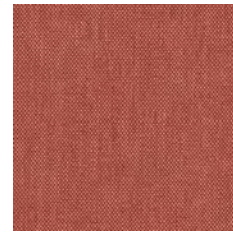
Fabric colours shown are an indication and should only be used as a guide.



**Birch**



**Citrus**



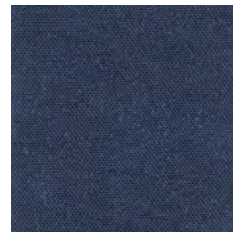
**Fire**



**Poppy**



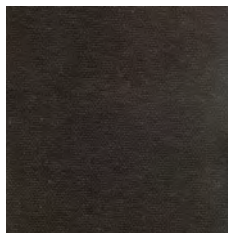
**Teal**



**Navy**



**Falcon**



**Carbon**



**Hathaway  
Charcoal**



**Hathaway  
Navy**

**Content:** 100% Polyester    **Width:** 137cm

**Performance:** Heavy Commercial

## Fabric Suppliers

**Innova:** [innova.com.au](http://innova.com.au)  
**Instyle:** [instyle.com.au](http://instyle.com.au)  
**Laine:** [laine.com.au](http://laine.com.au)  
**Sustainable Living:** [sustainablelivingfabrics.com.au](http://sustainablelivingfabrics.com.au)  
**Macquarie:** [macquarietextiles.com.au](http://macquarietextiles.com.au)  
**Simonsons Caprice:** [caprice.com.au](http://caprice.com.au)

**Svenska:** [svenskakj.com.au](http://svenskakj.com.au)  
**Vyfab:** [vyfab.com](http://vyfab.com)  
**Warwick:** [warwick.com.au](http://warwick.com.au)  
**Wortley:** [wgshowroom.com.au](http://wgshowroom.com.au)  
**Woven Image:** [wovenimage.com](http://wovenimage.com)

Most commonly used fabric suppliers.





**Custom Banquette**



**Solaris Range**



**Custom Booth**





**Beam Seating**



**Clerical & Managerial**



**Education**



**Executive**



**Healthcare**



**Hospitality**



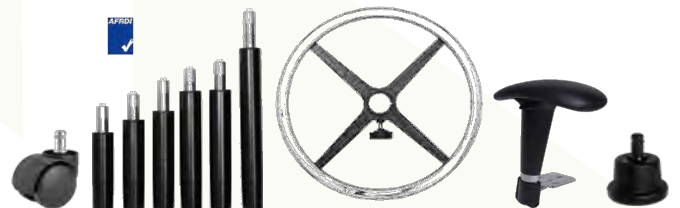
**Ottomans**



**Stools**



**Visitor**



**Accessories**

## Notes



Proudly 100%  
Australian Owned

ENQUIRES: 03 9761 7110  
[WWW.OFFICESEATING.COM.AU](http://WWW.OFFICESEATING.COM.AU)

Distributed by:



**YOUR SEATING SOLUTION SPECIALISTS**

© 2017 OSA All Rights Reserved

Rev\_SF002